

Christmas C2C



In this pattern you find 3 different drawings to make a corner to corner design. The big version is made in cotton so it's perfect to use as a potholder for your Christmas dinner. The small version is made in a shiny yarn, to sparkle as a cup holder. Mix and match to make your perfect holiday table setting!

Material:

For the big version:

- scheepjes catona: dark blue 164, green 515, brown 157, red 192, yellow 280, white 106
- hook size 2.5mm

For the small version:

- scheepjes maxi sweet treat: dark blue 124, green 412, brown 162, red 517, yellow 208, white 106
- hook size 1.25mm

Scissors

Needle

Size:

Big version in cotton: 21cm x21cm

Small version in maxi sweet treat: 10.5cmx10.5cm

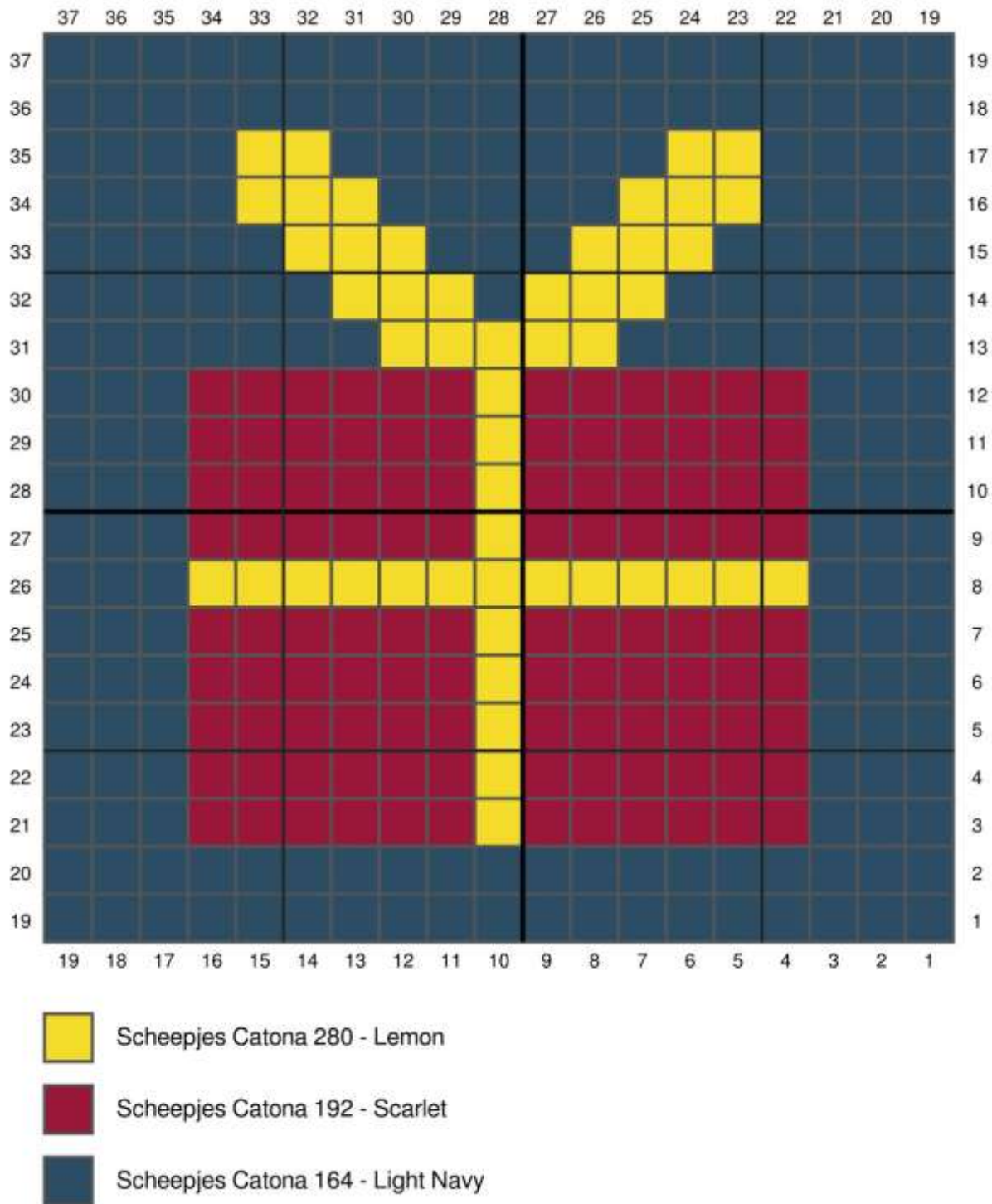
Pattern:

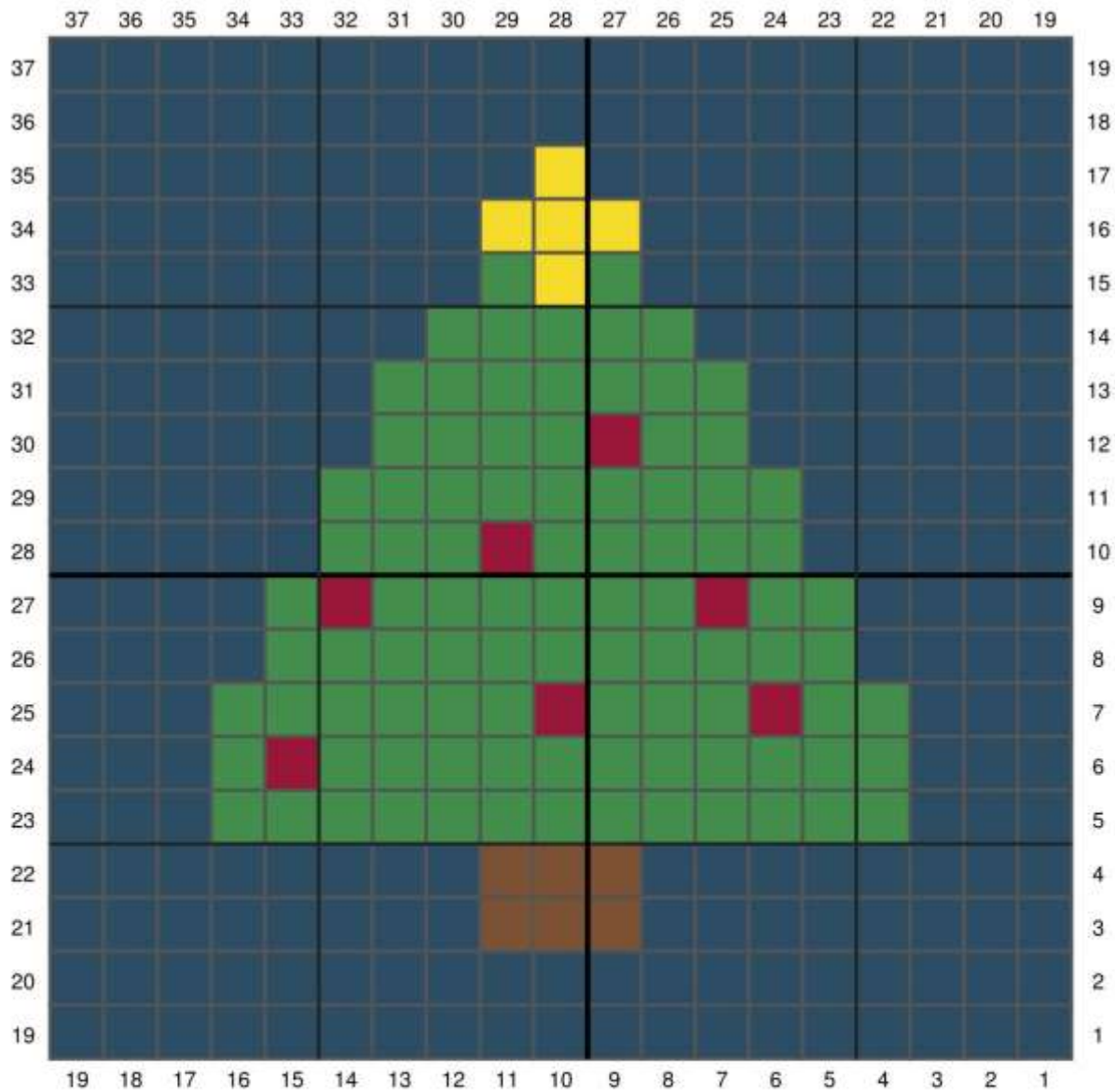
For the big version

You make corner to corner with 3 double crochet stitches for each square.

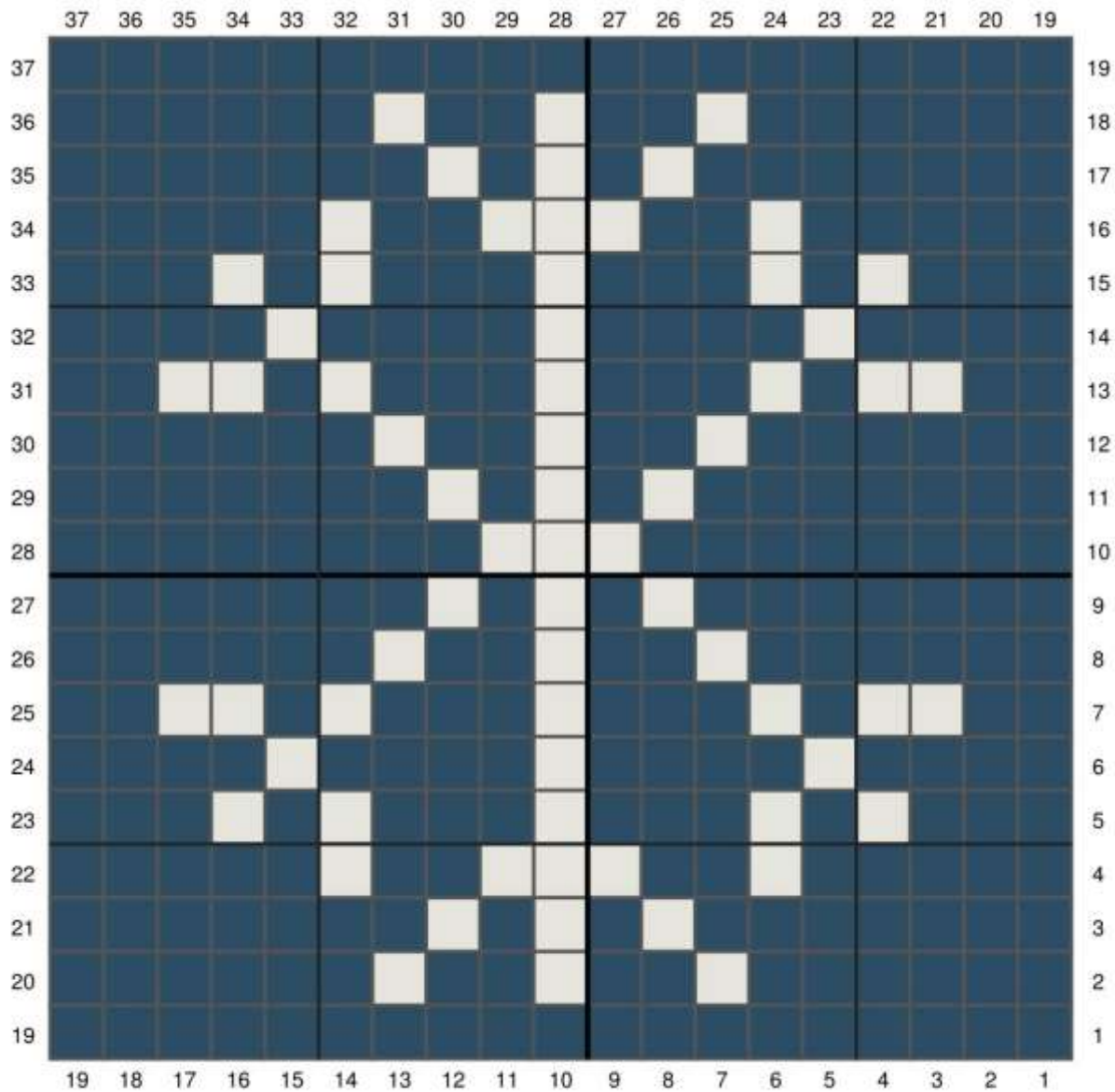
For the small version:

You make corner to corner with 2 half double crochet stitches for each square.





-  Scheepjes Catona 280 - Lemon
-  Scheepjes Catona 157 - Root Beer
-  Scheepjes Catona 192 - Scarlet
-  Scheepjes Catona 164 - Light Navy
-  Scheepjes Catona 515 - Emerald



Scheepjes Catona 164 - Light Navy



Scheepjes Catona 106 - Snow White



Lots of crochet fun!!

This pattern is designed by Yarning Kat. All rights reserved. Nothing in this pattern can be copied, shared or sold. This is a free pattern and can be used freely, with mentioning the designer. The finished product can be sold, with mentioning the designer.



Facebook: YarningKat

Instagram: yarningKat

Website: www.yarningkat.be

Mail: info@yarningkat.be